

Design a Three-Position Device for your Needs

1. Choose between five different top units



- No LEDs
- No front button
- No top button

JSHD4-1
2TLA020006R2100



- LEDs
- Front button
- Top button

JSHD4-2
2TLA020006R2200



- LEDs
- No front button
- No top button

JSHD4-3
2TLA020006R2300



- LEDs
- Front button
- No top button

JSHD4-4
2TLA020006R2400

2. Choose a bottom part suitable for your assembly



AA, AH, AJ



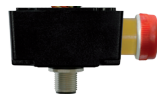
AB



AC, AD



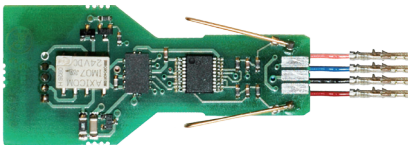
AF, AG



AE

AA	2TLA020005R1000 with cable gland
AB	2TLA020005R1100 with Cannon connection
AC	2TLA020005R1200 with M12 connection (5 poles)
AD	2TLA020005R1300 with M12 connection (8 poles)
AE	2TLA020005R1400 with M12 connection (8 poles) and emergency stop
AF	2TLA020005R1500 with M12 connection (4 poles) and 2 AS-i nodes (for front and top button)
AG	2TLA020005R1600 with M12 connection (4 poles) and 1 AS-i node (without front and top button)
AH	2TLA020005R1700 with cable gland and PCB with 10 screw connections
AJ	2TLA020005R1800 with cable gland and PCB with 16 screw connections

3. Choose hand recognition for making your three position device cheat protected (option)



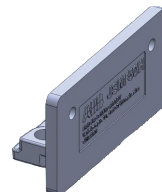
Anti-tamper PCB – 2TLA020005R0900

4. Check the chart (above right) to see if your combination is available

5. Choose a bottom plate (option)



JSM50G, bottom plate for Safety Interlock switch JSNY5
2TLA020205R6300



JSM50H, bottom plate for non-contact sensor Eden (Eva)
2TLA020205R6400